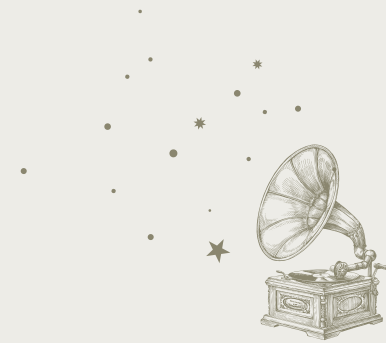




TOP: THE BARN DINING ROOM
 BOTTOM LEFT: THE LODGE
 BOTTOM RIGHT: THE ENCLOSURE



A PERFECT PARTY VENUE

Our dedicated reservations team are delighted to assist you in your quest to find & plan your perfect festive celebration.

WE HAVE 3 BEAUTIFUL SPACES AVAILABLE

Hire charge or minimum spend may apply

THE LODGE

UP TO 8 SEATED GUESTS

THE ENCLOSURE

UP TO 20 SEATED GUESTS

THE BARN DINING ROOM

UP TO 58 SEATED GUESTS

MAGICAL WINTER NIGHTS

Launching December 2023, magical winter nights arrive at The Hare & Hounds.

Enchanted woodlands meet alpine lodge in an all new festive experience.

Book our winter lodge for your own magical evening or book a table and join us to celebrate the season.

For more details contact us on dine@hareandhoundsnewbury.co.uk.